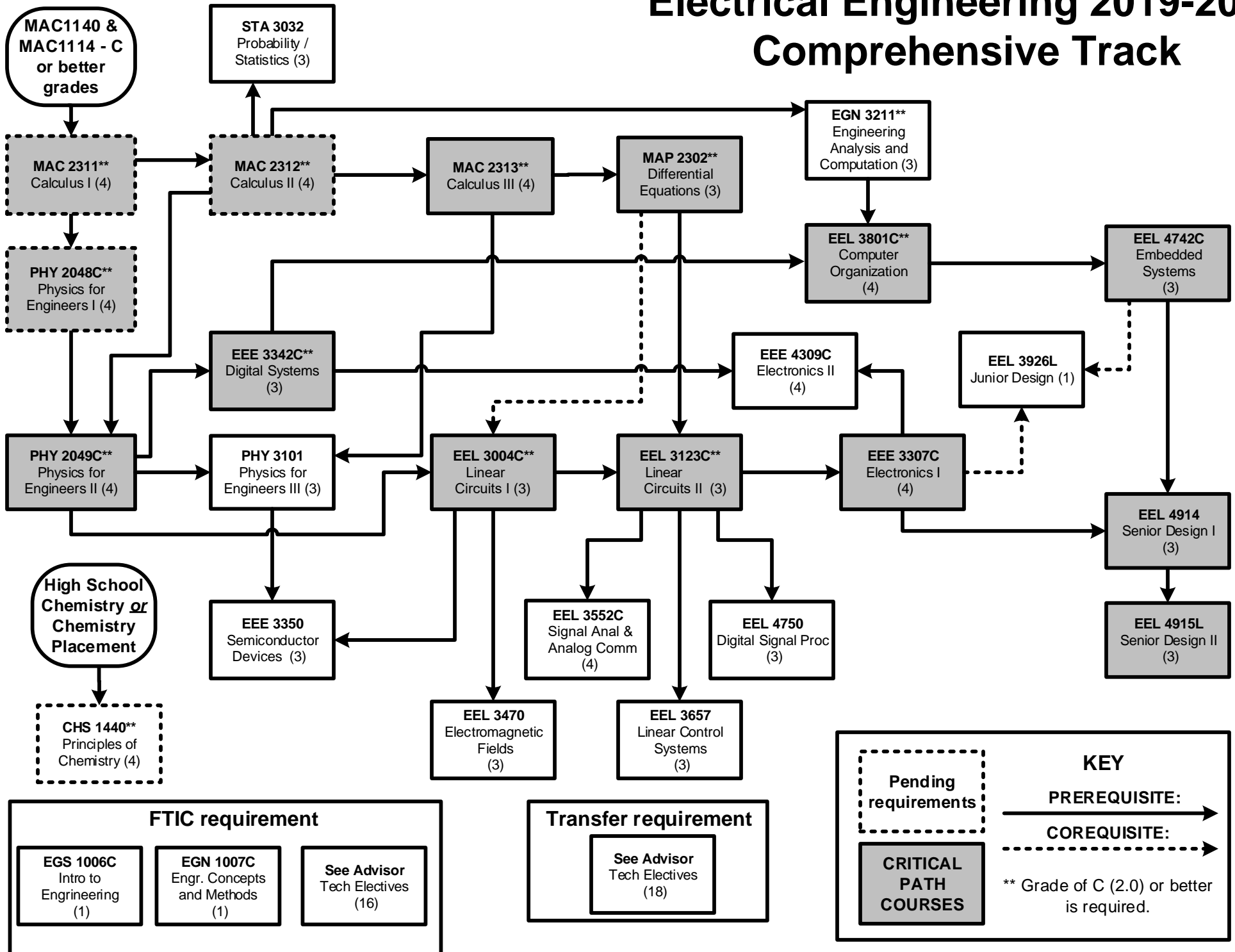


# Electrical Engineering 2019-2020 Comprehensive Track



# Bachelor of Science Electrical Engineering 2018-2019 Catalog

## Comprehensive Track

SEMESTER		Fall
Course No.	Hours	
Historical Foundation	3	
*MAC 2311C	Calculus I	4
SPC 1603C	Technical Presentations	3
EGS 1006C	Intro to Eng Profession	1
*CHS 1440	Principles of Chemistry	4

15

SEMESTER		Spring
Course No.	Hours	
ENC 1101	Composition I	3
EGN 1007C	Eng Concepts & Method	1
*MAC 2312	Calculus II	4
*PHY 2048C	Physics I	4
ECO 2013	Macroeconomics	3

15

SEMESTER		Summer
Course No.	Hours	

SEMESTER		Fall
Course No.	Hours	
*MAC 2313	Calculus III	4
*PHY 2049C	Physics II	4
ENC 1102	Composition II	3
*EGN 3211	Eng. Analysis & Comp.	3

14

SEMESTER		Spring
Course No.	Hours	
*MAP 2302	Differential Equations	3
*EEL 3004C	Electrical Networks	3
*EEE 3342C	Digital Systems	3
PHY 3101	Physics for Eng III	3
Cultural Foundation		3

15

SEMESTER		Summer
Course No.	Hours	
*EEL 3123C	Networks and Systems	3
STA 3032	Prob & Stats for Engr	3
Social Foundation		3

9

SEMESTER		Fall
Course No.	Hours	
*EEL 3801C	Comp. Organization	4
EEL 3552C	Analog & Dig Comm	4
EEE 3350	Semiconductor Devices I	3
EEL 3470	Electromagnetic Fields	3

14

SEMESTER		Spring
Course No.	Hours	
EEE 3307C	Electronics I	4
EEL 4750	Dig Signal Proc Fund	3
EEL 4742C	Embedded Systems	3
EEL 3657	Linear Control Systems	3
EEL 3926L	Junior Design	1
Science Foundation		3

17

SEMESTER		Summer
Course No.	Hours	
Internship or Co-operative Eduation		
is encouraged		

SEMESTER		Fall
Course No.	Hours	
EEL 4914	Senior Design I	4
Historical Foundation		3
Senior Elective		3
Senior Elective		3
Approved technical elective		4

17

SEMESTER		Spring
Course No.	Hours	
EEL 4915L	Senior Design II	3
EEL 4309C	Electronics II	4
Approved technical elective		3
Approved technical elective		3

13

SEMESTER		Summer
Course No.	Hours	

\* Requires a Grade of C or Better