



# Engineering Leadership & Innovation Institute at UCF

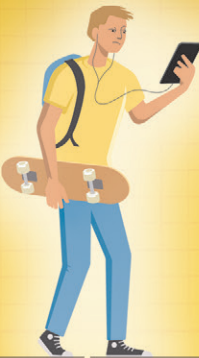
UNIVERSITY OF CENTRAL FLORIDA | ORLANDO

*Inspiring Students & Professionals to Deliver  
World-Changing Solutions*

[eli2.cecs.ucf.edu](http://eli2.cecs.ucf.edu)



# The UCF Difference: Lifelong Engagement



## Our Mission:

Help students discover their burning desire and confidence to deliver world-changing solutions.

## The Journey:

*Engineering leaders aren't born, they are developed.*

The world faces many challenges that can be solved with advanced technology and engineered systems. The world needs engineering leaders to bring forth global solutions.

The journey begins with **8,300+ undergraduate students** enrolled in the UCF College of Engineering & Computer Science. **All get some, and some get all** of the eli<sup>2</sup> undergraduate experiences listed.

### Undergraduate Experiences

<b>eli<sup>2</sup> Goal</b>	<ul style="list-style-type: none"> <li>Transform the undergraduate engineer into a working professional.</li> </ul>
<b>Student Focus</b>	<ul style="list-style-type: none"> <li>Enhance core engineering skills with creativity, innovation, collaboration and accountability.</li> </ul>
<b>Programs</b>	<ul style="list-style-type: none"> <li>Engineering Leadership minor or certificate.</li> <li>“Leaders Up Close” seminars.</li> <li>Maker Spaces: Harris Gathering Lab, Idea Lab, Texas Instruments Innovation Lab and Manufacturing Lab.</li> <li>Senior design boot camps.</li> <li>Career development experiences.</li> </ul>
<b>Value to Student</b>	<ul style="list-style-type: none"> <li>Marketable record of accomplishment that gets students hired.</li> </ul>
<b>Value to Employers</b>	<ul style="list-style-type: none"> <li>Robust talent stream of graduates who can hit the ground running on day one.</li> <li>Workforce skills that help grow the company.</li> <li>Build STEM in the U.S.</li> </ul>

### Graduate Experiences

<b>eli<sup>2</sup> Goal</b>	<ul style="list-style-type: none"> <li>Transform the working professional into a project/technical manager.</li> </ul>
<b>Student Focus</b>	<ul style="list-style-type: none"> <li>Enhance skills to lead and deliver solutions in a project-based environment.</li> <li>Understand and connect your solution to the strategy and portfolio.</li> <li>Use analytics to make the case.</li> <li>Bring creative solutions.</li> <li>Make systematic decisions and trade studies.</li> <li>Define and manage requirements.</li> <li>Work the project financials.</li> <li>Implement a project plan.</li> <li>Communicate.</li> <li>Lead the team.</li> </ul>
<b>Programs</b>	<ul style="list-style-type: none"> <li>Professional Engineering Management Program, a cohort of professionals working together to earn a Master’s of Science in Engineering Management.</li> </ul>
<b>Value to Student</b>	<ul style="list-style-type: none"> <li>Ability to move from an individual contributor to a project leader.</li> </ul>
<b>Value to Employers</b>	<ul style="list-style-type: none"> <li>Project leaders who can transform and grow the business.</li> </ul>

### Executive Experiences

<b>eli<sup>2</sup> Goal</b>	<ul style="list-style-type: none"> <li>Enable the transformation of the project/technical manager into an executive.</li> </ul>
<b>Student Focus</b>	<ul style="list-style-type: none"> <li>Enhance knowledge to solve the organization’s toughest problems.</li> <li>Share best practices with fellow leaders.</li> </ul>
<b>Programs</b>	<ul style="list-style-type: none"> <li>Community of Practice – a collection of organizational leaders who share common challenges and approaches.</li> </ul>
<b>Value to Student</b>	<ul style="list-style-type: none"> <li>Increased big-picture knowledge through sharing and learning with peers.</li> </ul>
<b>Value to Employers</b>	<ul style="list-style-type: none"> <li>Enhanced organizational performance.</li> <li>Cross-sharing of best practices across institutions and leaders.</li> </ul>

What participants are saying about the eli<sup>2</sup> experience:

*“I will endeavor to push to the edge in everything I do.”*  
Undergraduate Student

*“ The experience provided me with new tools, new processes and a fresh perspective to help me drive change and improve my organization, department and team.”*  
Graduate Student

*“ Hearing how peers from diverse industries approached similar challenges was enlightening. Time well spent.”*  
Community of Practice Participant





**Thank You  
to Our  
Partners:**

**Duke Energy  
Texas Instruments  
Harris Corporation**

**NASA-John F. Kennedy  
Space Center  
Lockheed Martin**

**Siemens Energy  
Walt Disney World  
Boeing**



**Engineering Leadership  
& Innovation Institute at UCF**

**[eli2.cecs.ucf.edu](http://eli2.cecs.ucf.edu)**



**COLLEGE OF  
ENGINEERING &  
COMPUTER  
SCIENCE**

**[www.cecs.ucf.edu](http://www.cecs.ucf.edu)**

**University of Central Florida  
Orlando, FL**

UCF  **Stands For Opportunity™**

## Contact



**Dr. Tim Kotnour**  
eli<sup>2</sup> Director

Professor,  
Industrial Engineering  
& Management Systems

407-823-5645  
[Timothy.Kotnour@ucf.edu](mailto:Timothy.Kotnour@ucf.edu)



**Dr. Robert Hoekstra**  
eli<sup>2</sup> Creative Director &  
Idea Lab Director

Assoc. Professor, Industrial  
Engineering &  
Management Systems

407-823-6175  
[Robert.Hoekstra@ucf.edu](mailto:Robert.Hoekstra@ucf.edu)



**Kate Hurt, '14**  
Assistant Director, eli<sup>2</sup>

407-823-0969  
[Kate.Hurt@ucf.edu](mailto:Kate.Hurt@ucf.edu)

**To see the full eli<sup>2</sup> team, visit our website and choose "About Us"**

## Why eli<sup>2</sup>?

Inside every engineer  
and computer scientist  
is a heart that desires to  
make the world better.

## Learn more:

Visit: [eli2.cecs.ucf.edu](http://eli2.cecs.ucf.edu)

 Like: [facebook.com/eli2ucf](https://facebook.com/eli2ucf)

 Follow: @eli2UCF

Call: 407-823-5645

## Support eli<sup>2</sup>.

Join the journey.  
Find out more today.